

OFFICE FOR LEASE  
Executive Tower

2101 Executive Drive | Hampton, Virginia



Property Features

- 136,430 SF eight story office building
- Suites available from 650 SF and larger
- Multiple office configurations available
- Lease Rate: 1<sup>st</sup> Floor - \$18.00 psf  
2<sup>nd</sup> - 8<sup>th</sup> Floor - \$17.50 psf
- Adjacent to and highly visible from I-64
- Located in the Coliseum Central commercial district
- Close to the Hampton Coliseum, Hampton Roads Convention Center, Peninsula Town Center and the Power Plant of Hampton Roads
- Ample parking
- Amenities include Tenant fitness center and conference center



For more information, contact:

**TERESA NETTLES**  
Senior Vice President  
757 873 9268  
[teresa.nettles@thalhimer.com](mailto:teresa.nettles@thalhimer.com)

One BayPort Way, Suite 100  
Newport News, VA 23606  
[www.thalhimer.com](http://www.thalhimer.com)



**THALHIMER**

OFFICE FOR LEASE  
**Executive Tower**

2101 Executive Drive | Hampton, Virginia



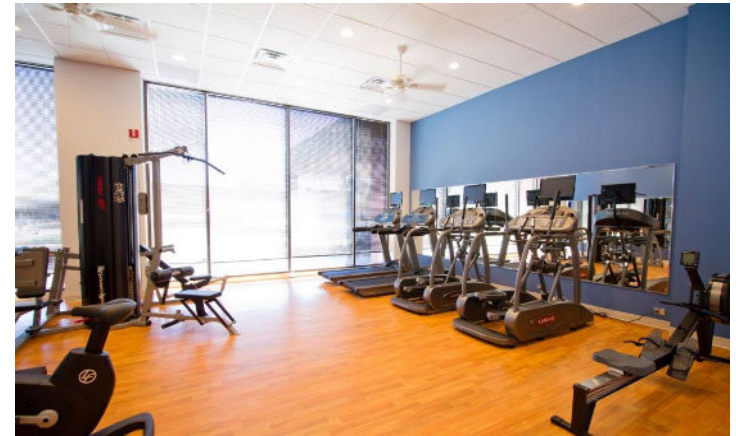
**BUILDING DIRECTORY**



**LOBBY**



**CONFERENCE ROOM**



**FITNESS CENTER**

For more information, contact:

**TERESA NETTLES**  
Senior Vice President  
757 873 9268  
[teresa.nettles@thalhimer.com](mailto:teresa.nettles@thalhimer.com)

One BayPort Way, Suite 100  
Newport News, VA 23606  
[www.thalhimer.com](http://www.thalhimer.com)

Independently Owned and Operated / A Member of the Cushman & Wakefield Alliance

Cushman & Wakefield | Thalhimer © 2015. No warranty or representation, express or implied, is made to the accuracy or completeness of the information contained herein, and same is submitted subject to errors, omissions, change of price, rental or other conditions, withdrawal without notice, and to any special listing conditions imposed by the property owner(s). As applicable, we make no representation as to the condition of the property (or properties) in question.





**THALHIMER**

OFFICE FOR LEASE  
**Executive Tower**

2101 Executive Drive | Hampton, Virginia



For more information, contact:

**TERESA NETTLES**  
Senior Vice President  
757 873 9268  
[teresa.nettles@thalhimer.com](mailto:teresa.nettles@thalhimer.com)

One BayPort Way, Suite 100  
Newport News, VA 23606  
[www.thalhimer.com](http://www.thalhimer.com)

Independently Owned and Operated / A Member of the Cushman & Wakefield Alliance

Cushman & Wakefield | Thalhimer © 2015. No warranty or representation, express or implied, is made to the accuracy or completeness of the information contained herein, and same is submitted subject to errors, omissions, change of price, rental or other conditions, withdrawal without notice, and to any special listing conditions imposed by the property owner(s). As applicable, we make no representation as to the condition of the property (or properties) in question.