

# FOR LEASE

## Pinewood Plaza

1919 Commerce Drive | Hampton, VA



**THALHIMER**

One BayPort Way, Suite 100  
Newport News, VA 23606  
[www.thalhimer.com](http://www.thalhimer.com)

**Andy Dallas, CCIM, SIOR**  
Senior Vice President  
757 873 3661  
[andy.dallas@thalhimer.com](mailto:andy.dallas@thalhimer.com)

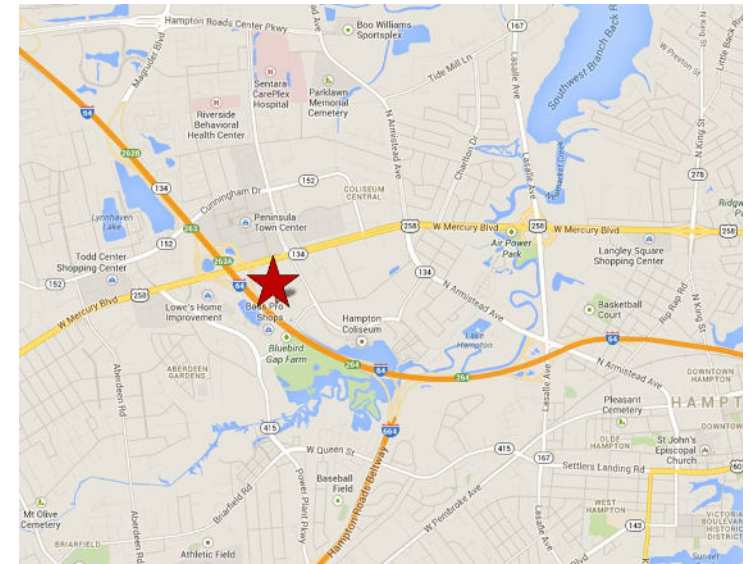


# PROPERTY FEATURES & PICS



## PROPERTY FEATURES

- \$16.50/SF, Full Service
- Suite 300: 1,079 SF
- Suite 330: 1,337 SF
- Suite 465: 3,259 SF
- Conference facility and fitness center on site
- Exterior signage opportunities available
- Interstate visibility, just off I-64 at Exit #263
- Adjacent to Holiday Inn, Marriott & Extended Stay Hotels
- Adjacent to Peninsula Town Center offering dining, entertainment and shopping
- Close proximity to NASA, Sentara Careplex, Newport News Shipyard & Langley Air Force Base



Independently Owned and Operated / A Member of the Cushman & Wakefield Alliance

Cushman Wakefield | Thalhimer © 2023. No warranty or representation, express or implied, is made to the accuracy or completeness of the information contained herein, and same is submitted subject to errors, omissions, change of price, rental or other conditions, withdrawal without notice, and to any special listing conditions, imposed by the property owner(s). As applicable, we make no representation as to the condition of the property (or properties) in question.



# ADDITIONAL PHOTOS



*Independently Owned and Operated / A Member of the Cushman & Wakefield Alliance*

*Cushman Wakefield | Thalhimer © 2023. No warranty or representation, express or implied, is made to the accuracy or completeness of the information contained herein, and same is submitted subject to errors, omissions, change of price, rental or other conditions, withdrawal without notice, and to any special listing conditions, imposed by the property owner(s). As applicable, we make no representation as to the condition of the property (or properties) in question.*

# TENANT TESTIMONIALS

## **Virginia Woodward, Business Administrator – Elite Auto Body**

*“Elite Auto Body Inc moved its corporate office to Pinewood Plaza in March 2020. We recognized the convenience of this location for supporting a satellite office for our five collisions repair centers. With easy access to Interstate I-64 and the western freeway, I-664, we can reach seven major cities within Hampton Roads. When traffic congestion limits our reach to the south side through the Hampton Roads Bridge Tunnel, access to I-64 from Pinewood Plaza allows an easy detour via I-664. The Pinewood Plaza location also provides convenient access to nearby town center where shopping and local eateries are plentiful. It truly is an ideal location.*

*While the ideal location is paramount to our operation, we also appreciate the spacious offices that are so well maintained. The facilities are thoroughly cleaned on a daily basis. Pinewood Plaza’s excellent security system, which limits access during off business hours, provides our staff with a safe work environment. And it certainly deters anyone with nefarious intentions from loitering about with the Hampton police force stationed here as well. Pinewood Plaza is a great place to establish a professional business office.”*

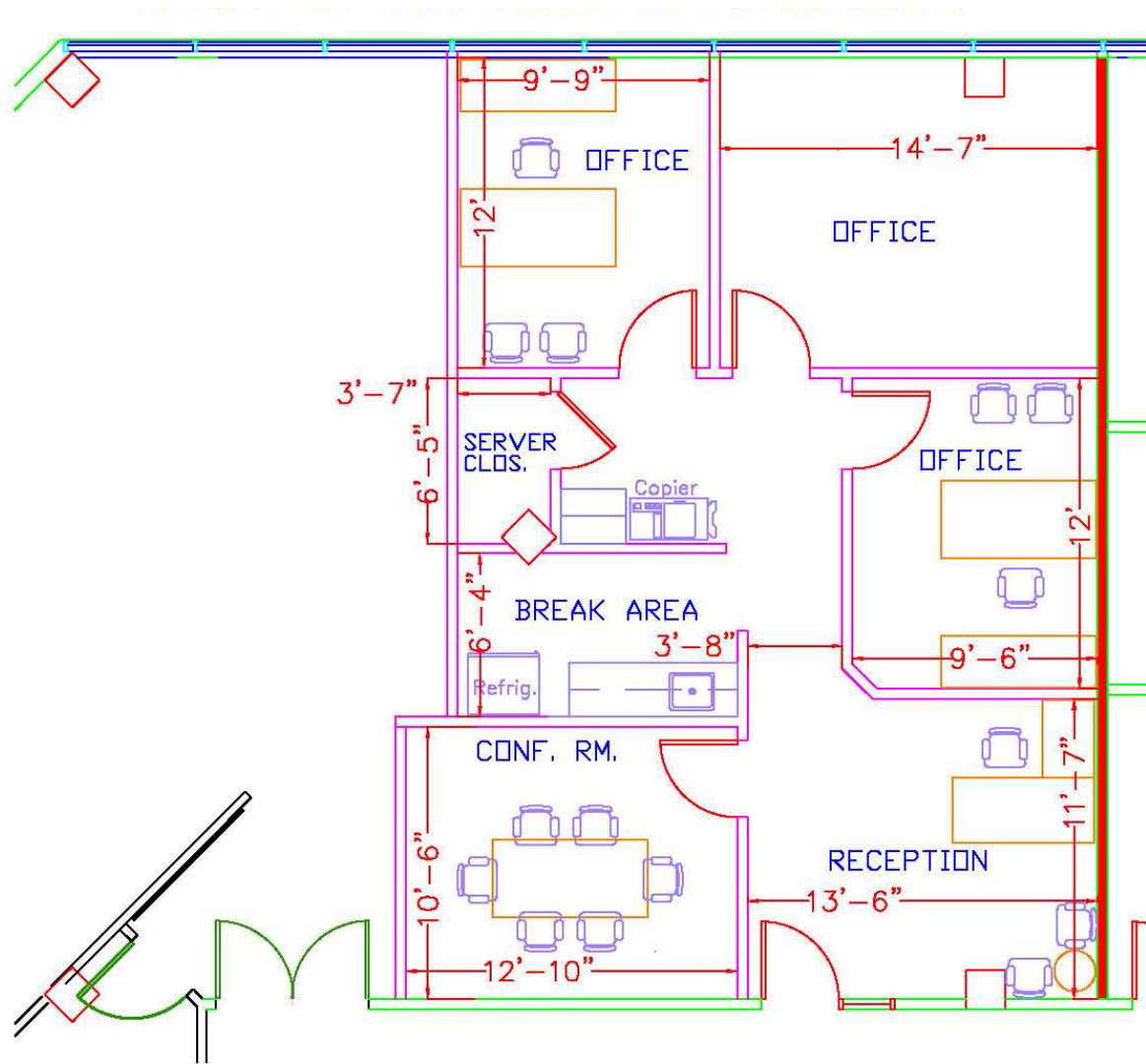
## **Sharon Durette-Hunt, President – Enspyr, LLC**

*“As a long-term Tenant at Pinewood Plaza, there are quite a few things that I like about being here. The management have been very accommodating to the growth of our company. We have been able to expand our space or move within the building four times. In addition, management is very attentive to situations in the building and parking lot with electronic and in person notifications. The location is central, pricing is reasonable, and parking is adequate.”*

## **Valerie Blackman, Administrative Services Manager – Hampton Convention & Visitor Bureau**

*“The Hampton Convention & Visitor Bureau has been a tenant of Pinewood Plaza since June 2002. Thalhimer is quick to remedy any repair issues in our suite as they are made aware of them. They inform all building tenants of upcoming actions – carpet and window cleaning, new tenants arriving, and safety maintenance. The annual Christmas and ice cream gatherings are also very much appreciated. Keep up the good work.”*

# SUITE 300: 1,079 SF

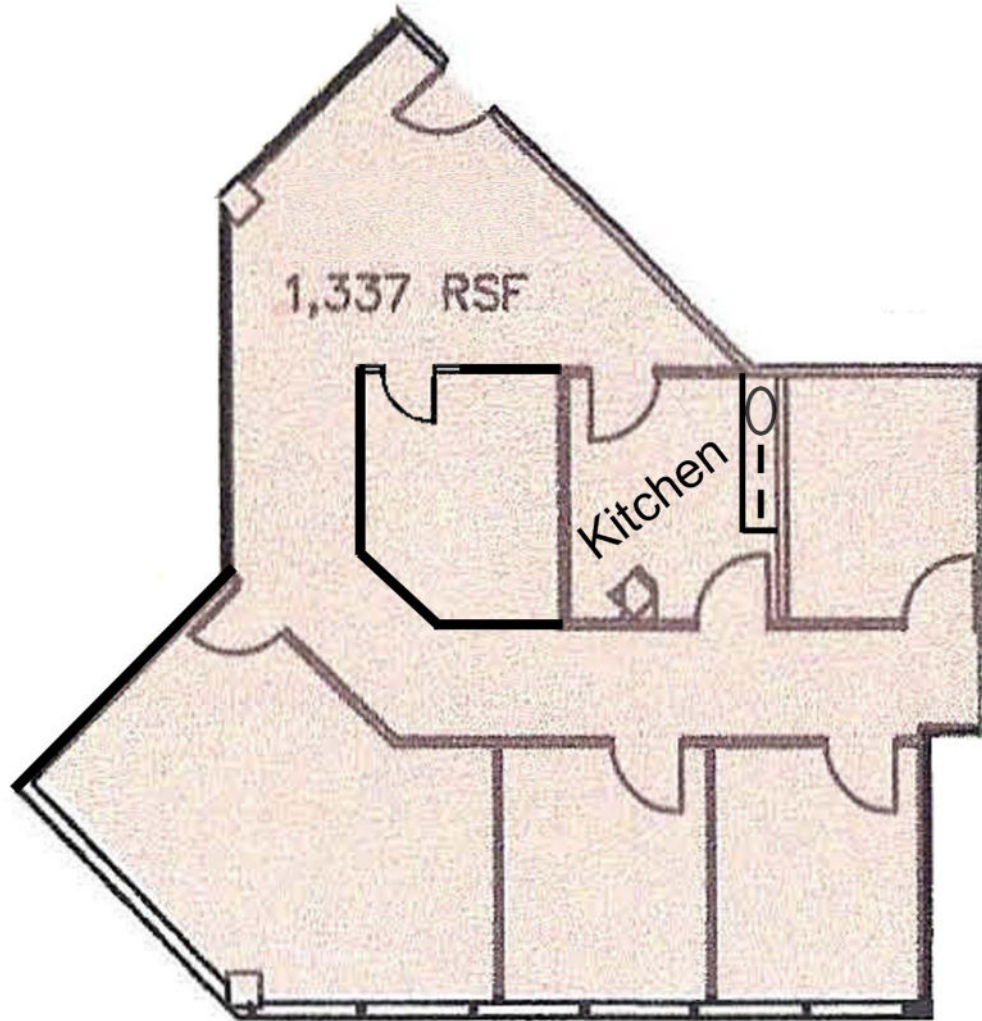


Independently Owned and Operated / A Member of the Cushman & Wakefield Alliance

Cushman Wakefield | Thalhimer © 2023. No warranty or representation, express or implied, is made to the accuracy or completeness of the information contained herein, and same is submitted subject to errors, omissions, change of price, rental or other conditions, withdrawal without notice, and to any special listing conditions, imposed by the property owner(s). As applicable, we make no representation as to the condition of the property (or properties) in question.



SUITE 330: 1,337 SF



*Independently Owned and Operated / A Member of the Cushman & Wakefield Alliance*

*Cushman Wakefield | Thalimer © 2023. No warranty or representation, express or implied, is made to the accuracy or completeness of the information contained herein, and same is submitted subject to errors, omissions, change of price, rental or other conditions, withdrawal without notice, and to any special listing conditions, imposed by the property owner(s). As applicable, we make no representation as to the condition of the property (or properties) in question.*